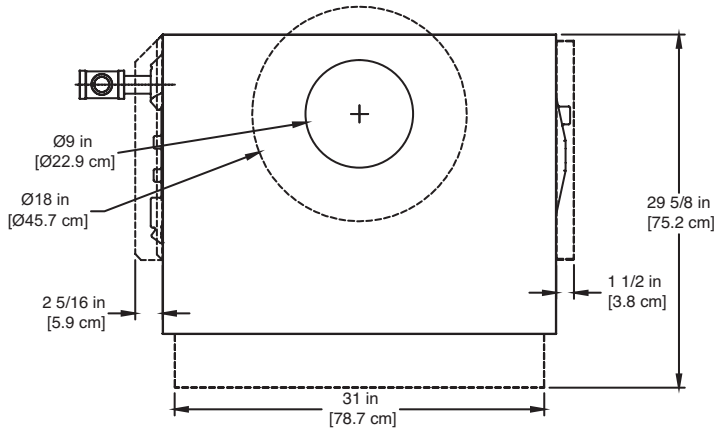


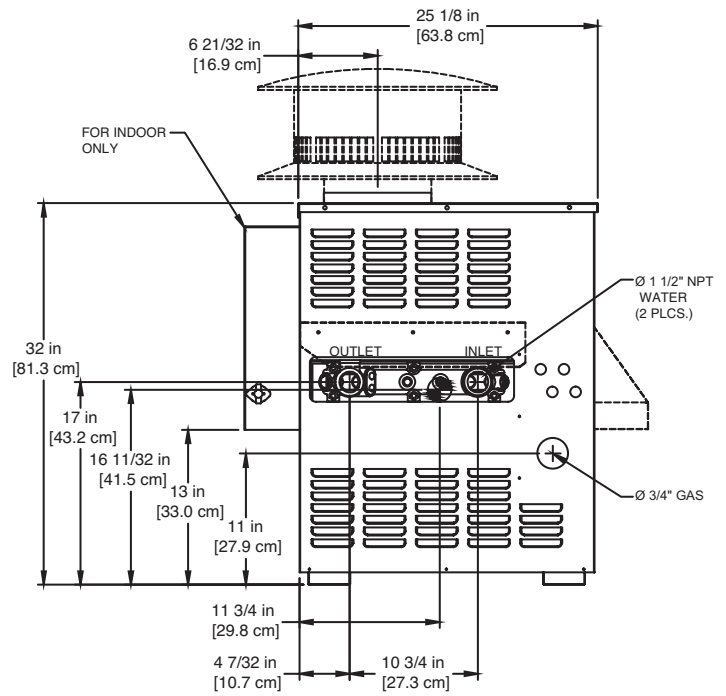
SPECTRUM 350

Category I Appliance

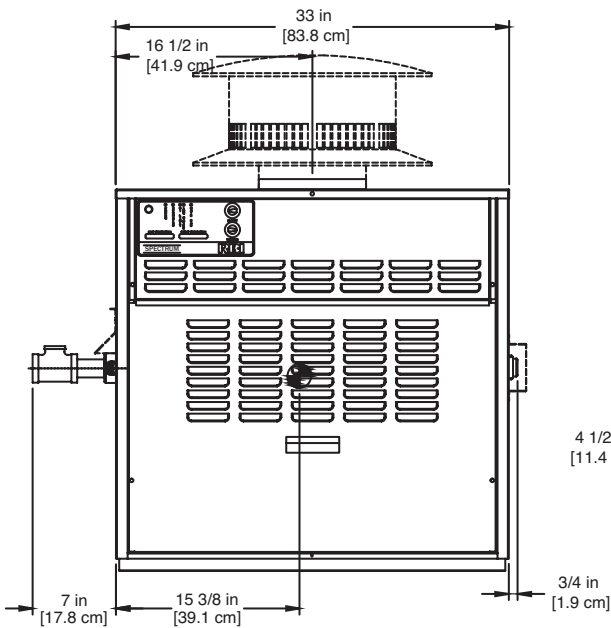
Must be vented into a negative pressure vent system.



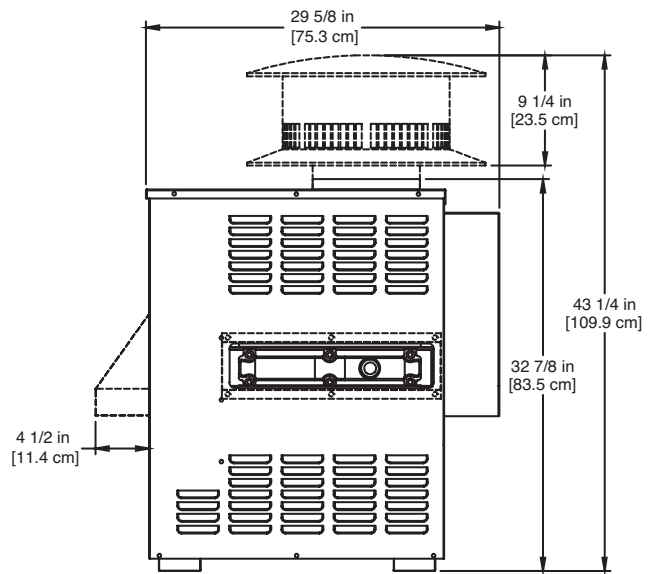
TOP



LEFT SIDE



FRONT



RIGHT SIDE

NOTE:
----- FOR OUTDOOR ONLY

RSUB-6-C

- Notes:
1. Dimensions are approximate and should not be used to "rough-in" equipment.
 2. Dimensions are subject to change without notice.

Spectrum 350 model water heater not available for sale in Canada due to NRCan Regulations.

SSPEC-350-9

BOILER CERTIFIED RATINGS & CAPACITIES

Fuel Type	Natural/Propane Gas	Boiler FLA	1*
Input BTU/hr.	350,000 / 103 kW	Min. Gas Pressure Required	5" WC**
Output BTU/hr.	285,600 / 84 kW	Max. Gas Pressure Allowed	14" WC
Electrical Requirements	120VAC / 1 ph / 60 hz	Operating Weight	252 lbs. / 114 kg.

BOILER / WATER HEATER TRIM & CONTROLS

Gas Valve - INT	Honeywell VR8304M 3/4"	Ignition Control (SB On/Off)	Honeywell S9361A2085
Gas Valve	Honeywell VR8304Q 3/4"- 2 Stg.	Ignition Control (SB 2 Stg.)	Honeywell S86IOM
Operating Control (SB/SW)	Honeywell - On/Off	Ignition Control (SW)	Honeywell S86IOM
Operating Control (SB/SW)	Jumo 2-Stage	Relief Valve - SW	3/4" x 3/4" set @ 125 psi
High Limit (SB/SW)	Jumo	Relief Valve - SB	3/4" x 3/4" set @ 30 psi
		Flow Switch	TACO

A.S.M.E.

ASME Sect IV Htg Surface	48.5 Sq. Ft. / 4.50 Sq. M.	Design Data	Max. 160 psig & 250°F
Water Volume	1.4 gal / 5.38 Liters		

* Add circulator amps.

** For incoming gas pressures lower than 5" WC natural or 11" WC propane, consult factory.

BOILER TEMPERATURE RISE / PRESSURE DROP

10°F / 5.5°C				20°F / 11.1°C				30°F / 16.7°C				
Flow Rate		Pressure Drop		Flow Rate		Pressure Drop		Flow Rate		Pressure Drop		
GPM	L/s	Ft	kPa	GPM	L/s	Ft	kPa	GPM	L/s	Ft	kPa	
57.1	3.6	1.20	3.5	28.6	1.8	0.33	1.0	19.0	1.2	0.20	0.5	2 Pass
-	-	-	-	28.6	1.8	2.39	7.0	19.0	1.2	1.10	3.3	4 Pass

WATER HEATER HOURLY RECOVERY CAPACITY (GPH & LPH)

40°F	22°C	60°F	33°C	80°F	44°C	100°F	56°C	120°F	67°C	140°F	78°C
840	3176	560	2118	420	1588	336	1271	280	1059	240	908

Spectrum 350 model water heater not available for sale in Canada due to NRCan Regulations.

REP FIRM	_____
SUBMITTED BY	_____
JOB NAME	_____
ARCHITECT	_____
ENGINEER	_____
CONTRACTOR	_____
DATE	_____

SPECTRUM 350

Category I Appliance

Must be vented into a negative pressure vent system.



A Division of Mestek, Inc.
Westfield, MA 01085
(413) 568-9571